

NEW ALBUM: DEUS EX MACHINA - 2023

## MUSIC HIGHLIGHTS

### → Live Music



The band can headline for a 1:30 set, provide support with two 45 minutes sets of all originals, or mixed sets featuring diverse covers from Ween, The Smiths, The Cure, Beck, Talking Heads, and more.

Fronted by the voice and presence of Jade Manna, Glen Manna on bass, Clint Willcox on drums, Sean Cohen on guitar, and Matthew Goldberg on keys (Dead Floyd and Musketeer Gripweed) for bigger shows by request, the band has a fluid set adjusted for each unique stage and audience - whether a venue or festival.



| Glen Manna | Clint Willcox | Jade Manna | Sean Cohen |  
| Bass Vocals | Drums | Lead Vocals | Guitar |

# NEO-PSYCHEDELIC MUSIC

**PICTURES OF MOSS** were literally forged out of fire. Rising from the ashes of a devastating blaze in 2018, which stole years of produced music and collected instruments, while also exacting a personal toll, just as they were about to tour promoting their first release, *Snowdrift*. The group emerged stronger, blossoming into a fully-realized band with songs trying to explain the world around us and what its meaning might be. What had started a decade earlier as an instrumental project with longtime friends morphed into the dynamic musical exploration it is today. Described as "warm and fuzzy psychedelia," **Pictures of Moss** takes you on a journey through themes of nature, science, and deep emotions. Fans of Ween, The Flaming Lips, and Talking Heads will find familiar ground here.

The neo-psychedelia rock band is the creation of Glen Manna—lyricist, composer, bass player and singer—originally from San Diego, CA, with a swing through Tulsa, OK, and now calling Fort Collins, CO home. He's joined by Clint Willcox on drums/percussion and Sean Cohen on guitar, who have been the core of previous projects since 2009. Jade Manna is front and center, handling lead vocals.

Their debut album *Snowdrift* caught the attention of the post-rock scene with a bold and swirly sound, punctuated by trippy vocals exploring the natural world around us with songs like "Wings Into Winter," "Sweet Luna," and fan favorite, "Bioluminescence." As the band fine-tuned the lineup, they've hit the stages of many Northern Colorado mainstays like Surfside 7, the Artery, The Colorado Room, and the famous FoCoMX festival, among others.

Like all great psychedelic-rock bands, **Pictures of Moss** has a fluid live show playing off the vibe and energy of the audience making each experience unique. As the band expands their reach regionally and nationally, longtime and new fans can expect to be pulled into a night of meaningful music shared collectively.

Invigorated by Glen Manna's renewed prolific writing, **Pictures of Moss** is poised to release their second album in 2023 exploring the mechanical and scientific side of life through the prism of Manna's mind. *Deus ex Machina* is filled with a bit more angst than previous works, prodding and questioning the mechanical nature of an increasingly more complicated world, and how that is affecting the human condition.

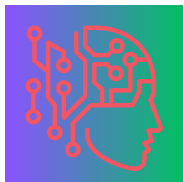
### → Snowdrift



Recorded and released in 2017, *Snowdrift*, the band's debut album, features 13 songs

The recording shines through with bold and swirling compositions exploring seasons and inspired by aspects of the natural world. Available on all streaming platforms, YouTube, and <https://picturesofmoss.bandcamp.com>.

### → Deus ex Machina



The new album to be released in 2023 features over 30 minutes of new songs from the band,

True to its name, this album is meant to take you on a journey through the mechanical state of our world, the artificial solutions we've created, and looking at the universe in which we are trying to make sense of it all.. Featuring the song "Satellite" - for an advance copy for review please email below.

### → Socials



<https://facebook.com/picturesofmoss>



[https://instagram.com/pictures\\_of\\_moss](https://instagram.com/pictures_of_moss)



<https://youtube.com/@picturesofmossmusic>